

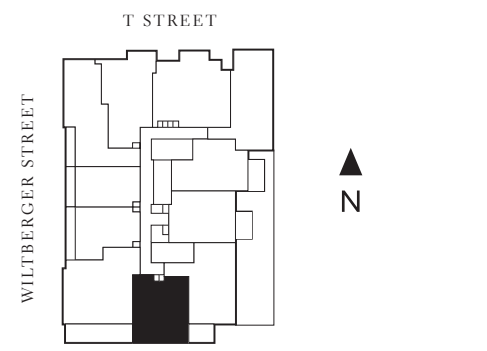
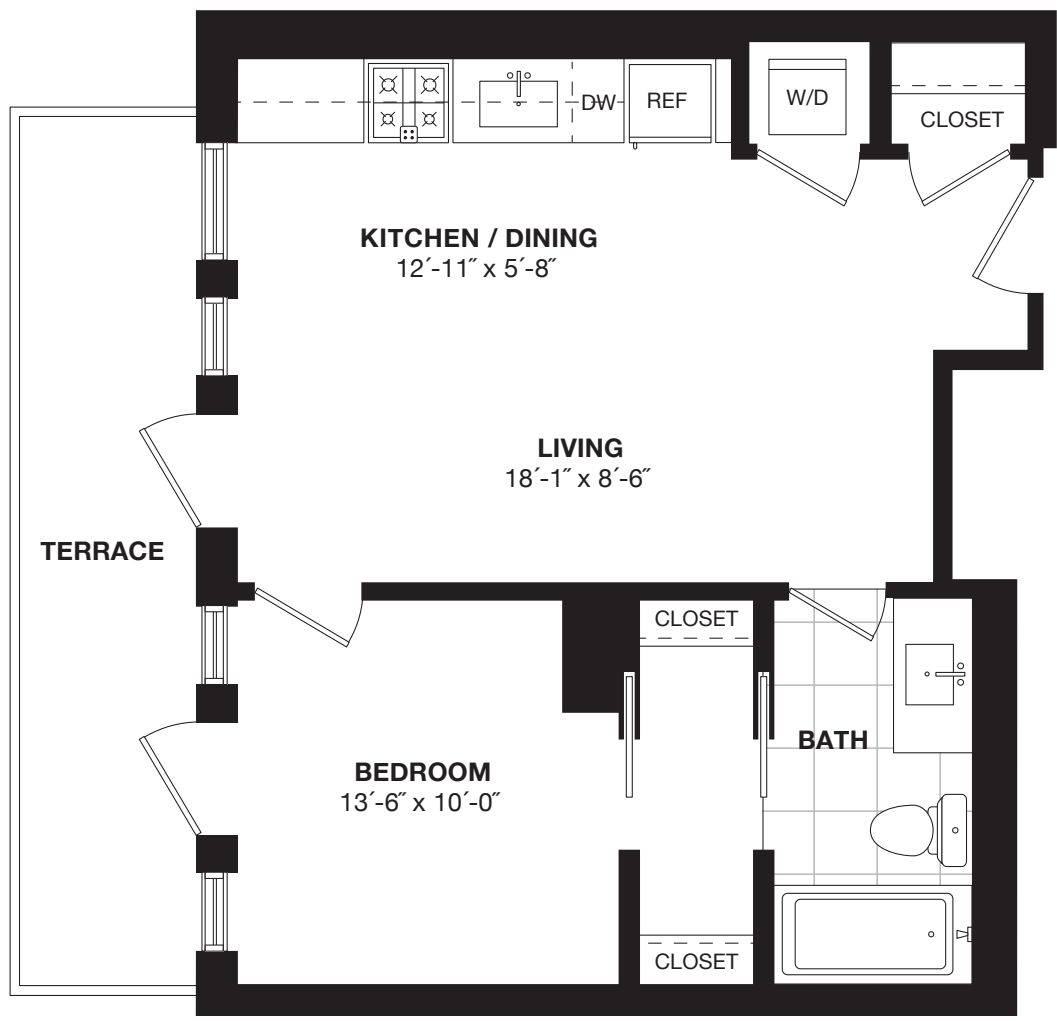
207

One Bedroom
One Bath
538 SF

FINISH PALETTE _____

PRICE _____

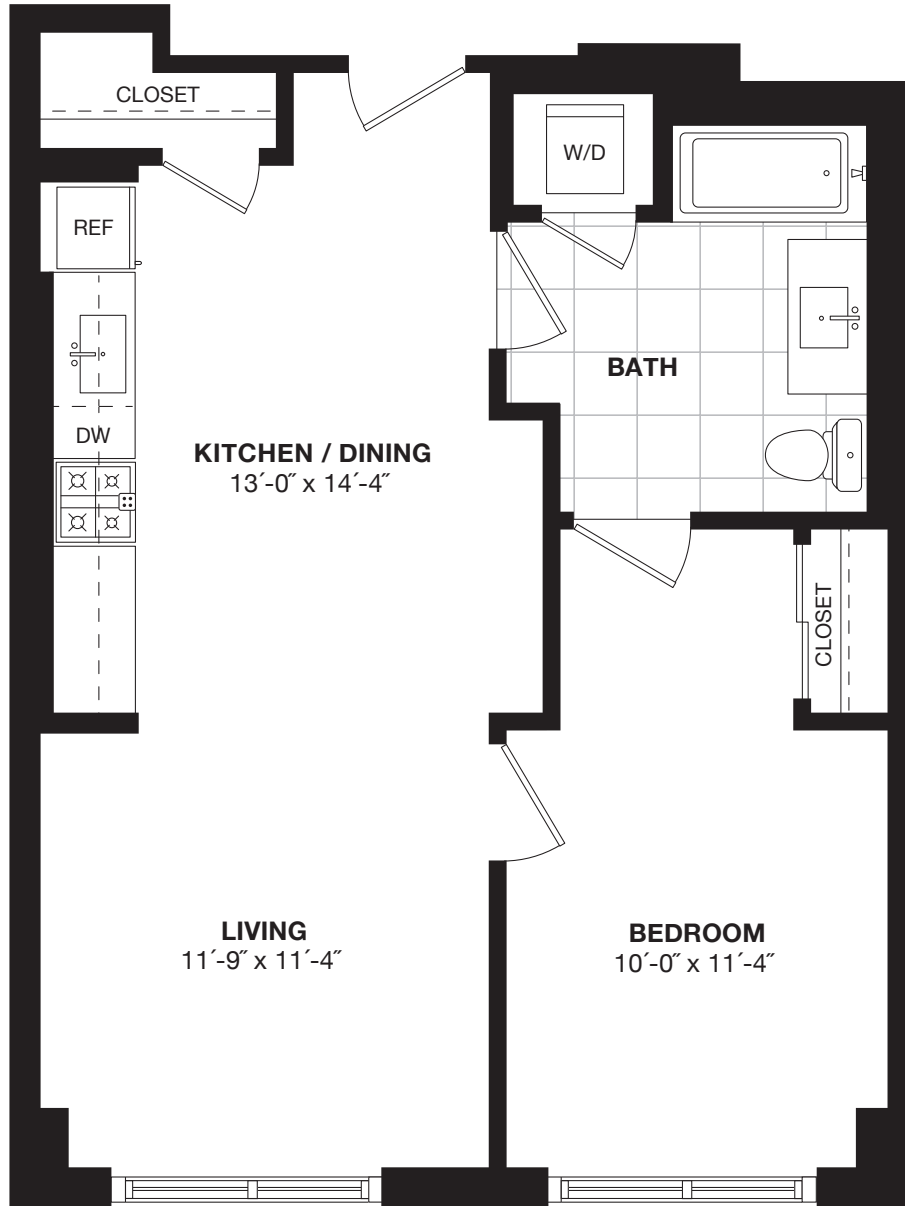
CONDO FEE _____



Sales Office
WeWork Wonder Bread Factory
641 S Street NW, Washington, DC 20001
TheShaw.com

The information and images shown here, including all furniture, fixtures, features, and appliances, are based on artists' conceptions for illustrative purposes only and shall not be relied upon as the basis of any contract, warranty, or other claim. Individual floor plans may, for example, represent opposite-hand or mirror-image layouts and a variety of column and exterior window configurations. All square footages and dimensions are approximate and plans are not to scale. All information provided herein is subject to change at any time without notice.

THE *Shaw*



305 | 405 | 505 | 605 | 705

One Bedroom
Onw Bath
689 SF

FINISH PALETTE _____

PRICE _____

CONDO FEE _____



Sales Office
WeWork Wonder Bread Factory
641 S Street NW, Washington, DC 20001
TheShaw.com

The information and images shown here, including all furniture, fixtures, features, and appliances, are based on artists' conceptions for illustrative purposes only and shall not be relied upon as the basis of any contract, warranty, or other claim. Individual floor plans may, for example, represent opposite-hand or mirror-image layouts and a variety of column and exterior window configurations. All square footages and dimensions are approximate and plans are not to scale. All information provided herein is subject to change at any time without notice.

Two Designer Finish Palettes

BRIGHT MINIMALIST

Sleek lines with natural accents, light wood floors, matte white cabinets, and striking porcelain countertops and backsplashes

WARM SOPHISTICATE

Warm tones of wood floors and cabinets balanced with clean lines of the porcelain countertops and backsplashes

Refined Features

OPEN LAYOUTS

- Expert design maximizes space for a seamless living experience
- Expansive windows with roller shade system and sweeping city views
- Kährs wide-plank oak flooring throughout
- Full-sized, stacked Blomberg washer and dryer

CHEF-CALIBER KITCHENS

- Italian-made kitchen cabinetry
- Porcelanosa XLIGHT porcelain slab countertops and backsplashes
- Bosch and Liebherr/ Blomberg kitchen appliances
- Pendant lights above kitchen island and undercounter lighting

CITY SPA BATHROOMS

- Frameless glass shower enclosures
- Custom vanities
- Lighted mirrors

SMART HOME TECHNOLOGY

- Controlled building access
- Latch keyless front door security
- Virtual front desk and integrated security, package and food systems
- Individual smart thermostats

PERSONAL OUTDOOR SPACE*

- Private balconies
- Expansive views of DC

Boutique Amenities

EXTERIOR DESIGN

- The striking exterior perfectly blends the first two floors of historic facades with the upper six floors of brick, glass and metal

WELCOMING LOBBY

- A curated mix of textures, finishes and tasteful art
- Comfortable seating and atmospheric lighting

ROOFTOP TERRACE & LOUNGE

- Outdoor space features seating options and gas grill
- Owner's lounge with kitchen, entertainment and fireplace
- Unobstructed views of Shaw and DC landmarks

PARKING & STORAGE

- Garage parking
- Bicycle rooms
- Additional storage available

IDEAL LOCATION

- Ground floor retail
- Centrally located in the Shaw district

*In select units.